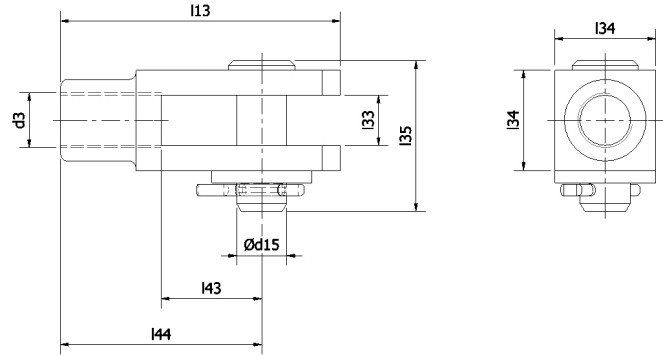


# Gabelgelenk, Gelenkkopf, Kolbenstangenmutter aus Edelstahl

## Gabelgelenk Edelstahl – GFX

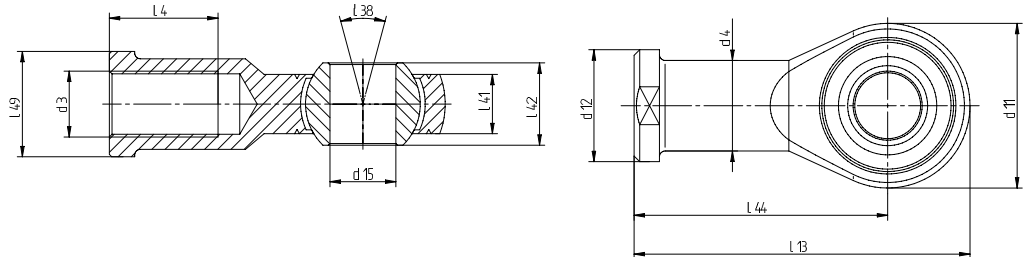
Material: 1.4305



Typ	d <sub>3</sub>	l <sub>13</sub>	B <sub>33</sub> <sup>12</sup>	l <sub>34</sub>	l <sub>35</sub>	l <sub>43</sub>	l <sub>44</sub>	d <sub>15</sub> <sup>h11</sup>	Gewicht	Bestell-Nr.
GFX-M4	M4	21	4	8	13,0	8	16	4	0,006	E080020002
GFX-M6	M6	31	6	12	19,5	12	24	6	0,020	E080020003
GFX-M8	M8	42	8	16	25,0	16	32	8	0,047	E080020003
GFX-M10x1,25	M10x1,25	52	10	20	31,0	20	40	10	0,094	E080020020
GFX-M12x1,25	M12x1,25	62	12	24	38,0	24	48	12	0,154	E080020021
GFX-M16x1,5	M16x1,5	83	16	32	48,0	32	64	16	0,350	E080020022
GFX-M20x1,5	M20x1,5	105	20	40	57,0	40	80	20	0,680	E080020023
GFX-M27x2	M27x2	148	30	55	77,5	54	110	30	1,820	E080020024

## Gelenkkopf sphärisch Edelstahl – GSX

Material: 1.4305



Typ	d <sub>3</sub>	l <sub>4</sub>	l <sub>13</sub>	l <sub>38</sub>	l <sub>41</sub>	l <sub>42</sub>	l <sub>44</sub>	l <sub>49</sub>	d <sub>4</sub>	d <sub>11</sub>	d <sub>12</sub>	d <sub>15</sub> <sup>h7</sup>	Gewicht	Bestell-Nr.
GSX-M4	M4	12	31	14	5,25	7	24	8	7,8	14	9,5	4	0,011	E080110101
GSX-M6	M6	12	40	13	6,75	9	30	11	10,0	20	13	6	0,030	E080110102
GSX-M8	M8	16	48	14	9,00	12	36	13	12,5	24	16	8	0,050	E080110103
GSX-M10x1,25	M10x1,25	20	57	13	10,50	14	43	17	15,0	28	19	10	0,080	E080110001
GSX-M12x1,25	M12x1,25	22	66	13	12,00	16	50	19	17,5	32	22	12	0,120	E080110002
GSX-M16x1,5	M16x1,5	28	85	15	15,00	21	64	22	22,0	42	27	16	0,230	E080110003
GSX-M20x1,5	M20x1,5	33	102	14	18,00	25	77	32	27,5	50	34	20	0,420	E080110004

## Kolbenstangenmutter Edelstahl – DSX

Material: V4A

Ø mm	A	B	C	Best.-Nr.
32	M10x1,25	17	5	E140060016
40	M12x1,25	19	6	E140060017
50-63	M16x1,5	24	8	E140060018
80-100	M20x1,5	30	10	E140060019
125	M27x2,0	41	13,5	E140060020
160-200	M36x2,0	55	18	E140060021

